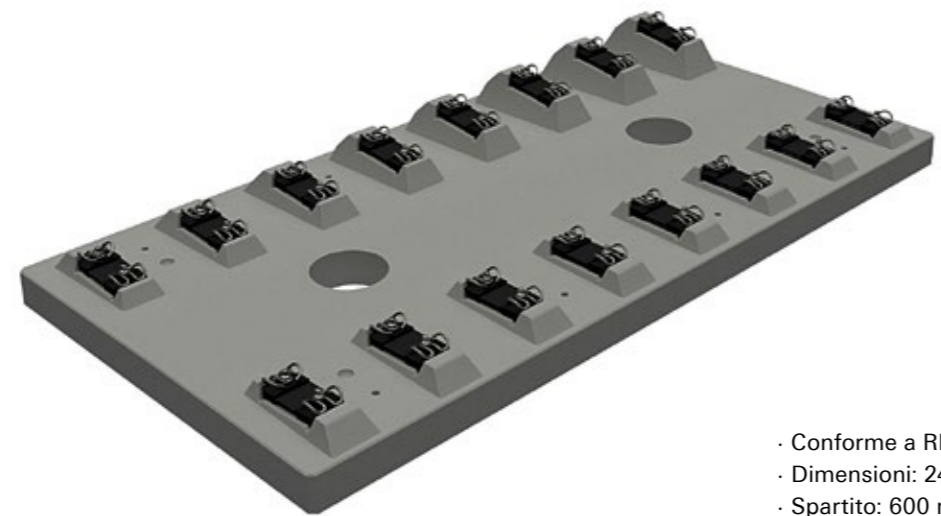
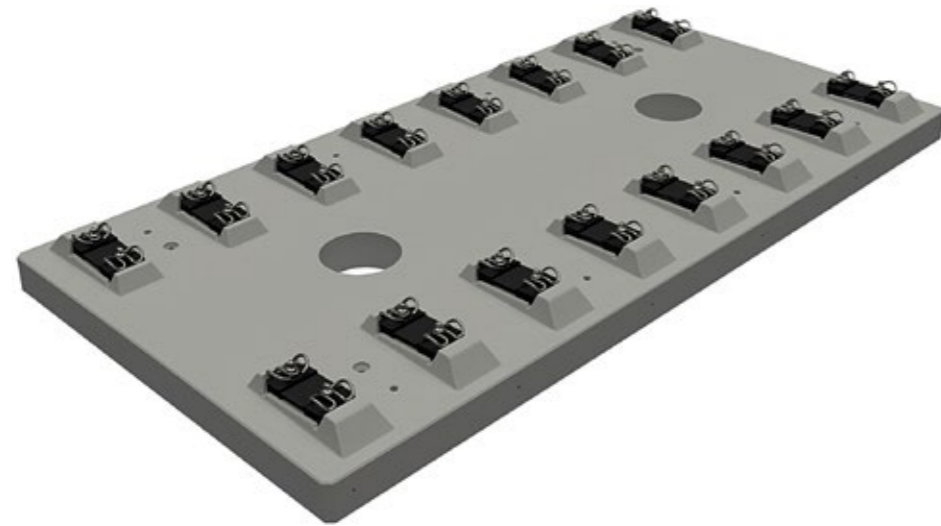


SISTEMA BALLASTLESS SU PIASTRE IN C.A.P.

BALLASTLESS TRACK SYSTEM WITH PRESTRESSED CONCRETE SLABS



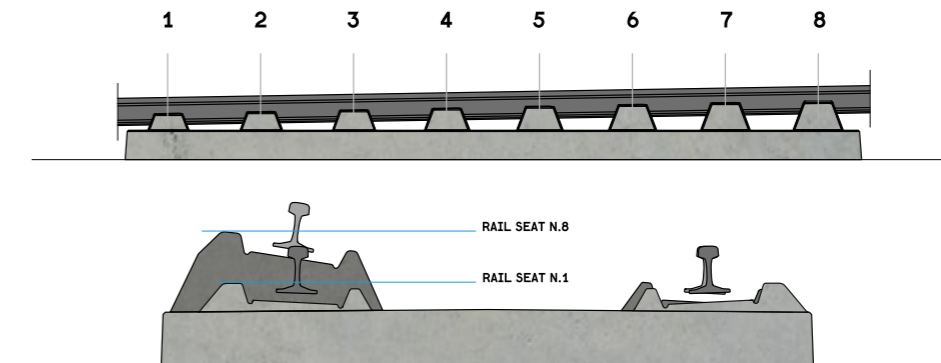
- Conforme a RFI DTCSI SF AR 08 002 1 A
- Dimensioni: 2400x4760x200 mm
- Spartito: 600 mm
- According to RFI DTCSI SF AR 08 002 1 A
- Size: 2400x4760x200 mm
- Rail seat distance: 600 mm

REGOLAZIONE ALTIMETRICA DI OGNI SEDE ATTACCO

VERTICAL ADJUSTMENT OF EACH RAIL SEAT

Ogni attacco viene regolato per la sopraelevazione di progetto

Each rail seat is regulated for the design cant



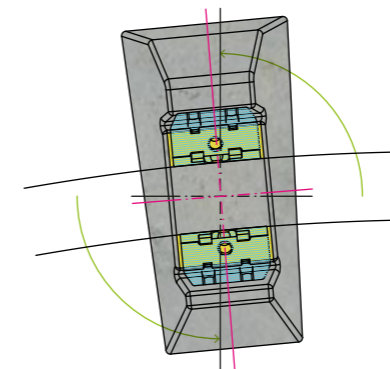
ROTAZIONE REGOLABILE

DI OGNI SINGOLA SEDE ATTACCO

ADJUSTABLE ROTATION OF EACH RAIL SEAT

Corretto contatto tra piastrino e rotaia

Right contact between the angled guide plate and the rail



REGOLAZIONE TRASVERSALE

DI OGNI SINGOLA SEDE ATTACCO

LATERAL ADJUSTMENT OF EACH RAIL SEAT

Per realizzare:

- Una traiettoria curvilinea della rotaia in relazione al raggio della curva
- La regolazione dello scartamento

To achieve:

- A curve rail path depending on the curve radius
- The regulation of the rail gauge

